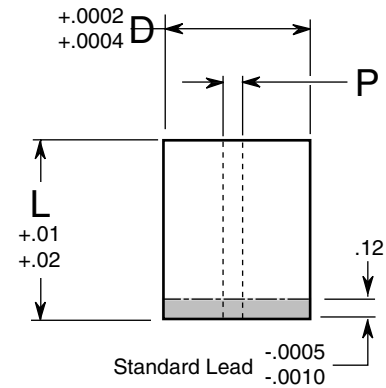


EDM DIE BLANKS

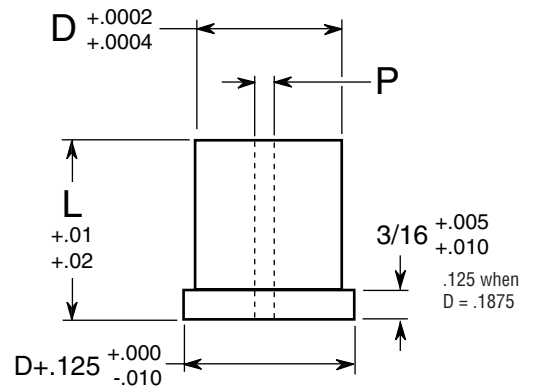
M-2: Rc 60/63 • PM-10V: Rc 61/63

Style EDB or EDH	Body Dia. D	Dia. Through P	Standard Lengths L	Price Each			
				M-2		PM-10V	
				EDB	EDH	EDB	EDH
18	.1875	.030	1/2 5/8 3/4 7/8 1 1 1/8	9.57	11.97	14.44	17.00
25	.2500	.046	1/2 5/8 3/4 7/8 1 1 1/8	9.44	11.82	14.38	16.93
31	.3125	.046	1/2 5/8 3/4 7/8 1 1 1/8 1 1/4	9.22	11.54	14.84	17.47
37	.3750	.062	1/2 5/8 3/4 7/8 1 1 1/8 1 1/4 1 3/8 1 1/2	9.32	11.66	15.54	18.29
43	.4375	.062	1/2 5/8 3/4 7/8 1 1 1/8 1 1/4 1 3/8 1 1/2	10.35	12.96	17.63	20.75
50	.5000	.093	1/2 5/8 3/4 7/8 1 1 1/8 1 1/4 1 3/8 1 1/2	10.80	13.52	18.89	22.23
62	.6250	.093	3/4 7/8 1 1 1/8 1 1/4 1 3/8 1 1/2	12.56	15.71	22.60	26.60
75	.7500	.093	3/4 7/8 1 1 1/8 1 1/4 1 3/8 1 1/2	15.59	19.50	28.12	33.09
87	.8750	.093	3/4 7/8 1 1 1/8 1 1/4 1 3/8 1 1/2	20.84	26.07	37.52	44.16
100	1.0000	.125	3/4 7/8 1 1 1/8 1 1/4 1 3/8 1 1/2	22.42	28.04	42.19	49.64
125	1.2500	.125	3/4 7/8 1 1 1/8 1 1/4 1 3/8 1 1/2	28.17	35.22	51.16	60.19

STYLE EDB



STYLE EDH



Concentricity "P" to "D" .005

Quantity Discounts			
1 - 9	10 - 24	25 - 49	50 +
NET	5%	10%	CALL

How To Order: EXAMPLE			
Style	Length	Mat.	Qty.
EDH 25	1"	M-2	10

- Delivery from stock
- **SPECIALS:** Complete to B/P; available in A-2, PM-M4, D-2; custom hole location.